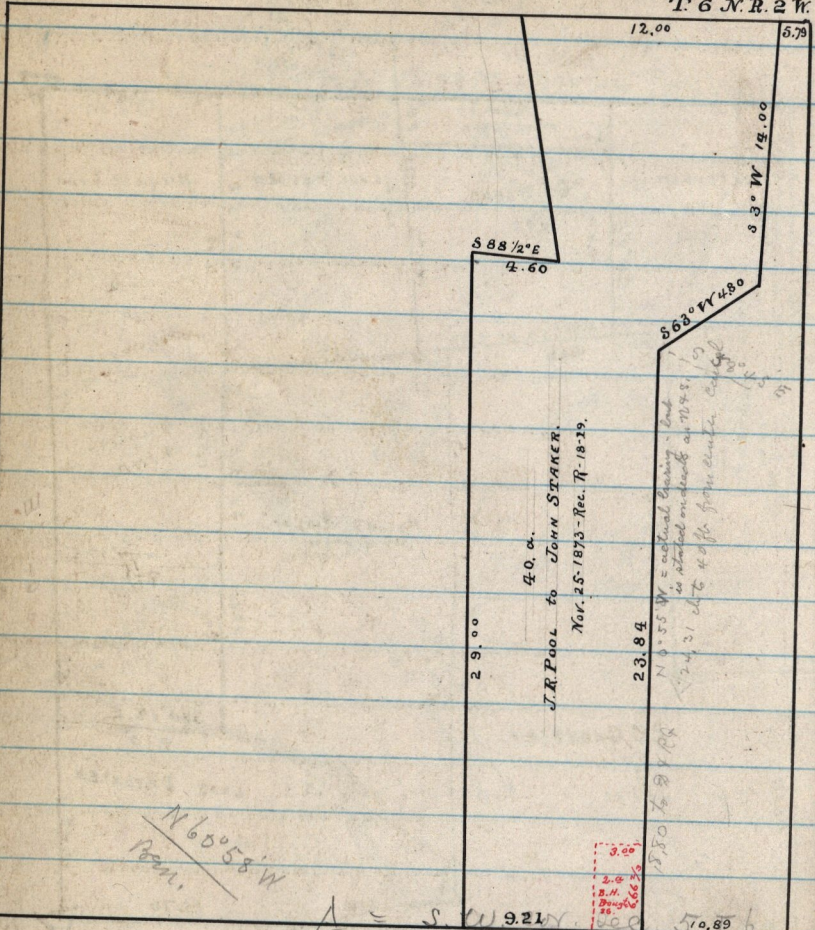


180
200
250
172
20
20

S.E. 1/4 Sec 25

T. 6 N. R. 2 W.



N 60° 58' W
180m.

S 49° 26' W
25.00
S 20° 22' W
3000

S 55° 43' E
S.E. 1/4 S.W. 1/4 Sec 9
T. 6 N. R. 2 W.

24.31 etc. 40 ft from center
N 8° 55' W = actual bearing - but
is actual on sheet as 1748.
1750 to 34.00

3.00
3.00
2.00
2.00
16.00

27.94

14
38
20